



Healthy Families Illinois™

Sinnissippi Centers, Inc.

Advisory Newsletter—November 2017

Welcome to this edition of the Healthy Families Illinois (HFI) program Advisory Newsletter. Please take time to read the participant success story below.

Anna's parents divorced when she was an infant. As a result of the divorce, Anna and her mother lived with her grandparents. Anna's mom remarried, at which time Anna went to live with her mom and step-father. Anna's struggles began with the abuse by her step-father, who is also an alcoholic. Anna was expected to stay in her room all day and not eat as discipline. Anna developed behavior issues as a teen running away from home. Anna attempted suicide and lived in a juvenile facility for 1 week. At the age of 18, Anna met a guy and through him became a heroin addict. Anna was an active user for 3 years. Anna suffers from mental health issues. Anna moved to Illinois with the father of her baby shortly after learning about the pregnancy. Anna continues to run from her problems by returning to Utah without notice. At this point, Anna and her boyfriend have worked through many of their problems and had a second child. As Anna gains stability she has obtained her driver's license and a job that she likes. Anna recognized she wasn't feeling well mentally and returned to therapy. Anna feels much better and stronger. Anna and her boyfriend continue to work on their relationship and are increasing the number of outings as a family. Anna is now 4 years sober and feels stronger than she has in a long while. HFI is proud of Anna's achievements and will continue to support mom and her family.

Healthy Families Referral Methods

- ◆ FAX or MAIL the referral/screening form to the Sinnissippi Centers' Sterling office.
- ◆ PHONE in the referral.
- ◆ E-MAIL the referral.
- ◆ Help mom call or mom can call

Healthy Families Target Population

- ◆ Expecting and parenting teens and women, regardless of the number of prior births.

For Information Contact:

Kimberly Crump, Program Supervisor
Sinnissippi Centers, Inc.,
2611 Woodlawn Road, Sterling, IL 61081

Phone: (815) 625-0013 ext. 113

Toll free: (800) 782-1584

FAX (815) 625-0197

E-mail: kimcrump@sinnissippi.com

**DON'T FORGET ABOUT
OUR FACEBOOK PAGE**
**Healthy Families
Illinois: Carroll, Lee, Ogle
and Whiteside**

Healthy Families provides...

- ◆ Education regarding fetal development, emotional and physical development of infants and children.
- ◆ Support to moms during this new time in their lives as they face the challenges of parenting.
- ◆ Home visiting and DOULA services for participants.
- ◆ Certified Infant Massage Therapist to promote positive parent-child interaction through touch.
- ◆ Certified Lactation Consultant to promote and assist with breastfeeding

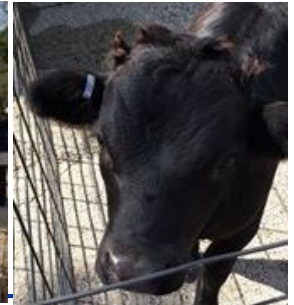
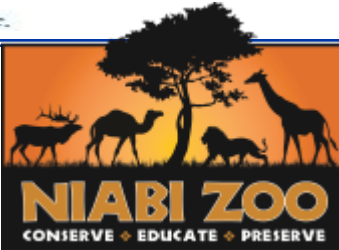


SINNISSIPPI CENTERS
Providing care, offering hope

Healthy Families News

Janda Hicks and Sarah Bloyd are now Certified Family Assessment Specialist. HFI had a booth at Taste of Fiesta which featured the HFI version of a Jalapeno as seen to the right. →

We continue to need referrals for the Mothers and Babies group research project through Northwestern University in Chicago. Moms **do not** have to be a Sinnissippi or HFI client to participate in the project. Contact Kim for more details.



Participant Activities

HFI hosted the Annual Niabi Zoo trip for the families in June. Picnics were held in July and August for outdoor Fun in the Sun. In August, HFI joined with PAT to host a petting zoo for families. HFI continues to have monthly educational groups with Karla Belzer from the U of I Extension.

Healthy Families At A Glance

Program Statistics

July Referrals

DHS	Positive	2
	Negative	4
ISBE	Positive	0
	Negative	0

August Referrals

DHS	Positive	4
	Negative	3
ISBE	Positive	0
	Negative	0

September Referrals

DHS	Positive	3
	Negative	0
ISBE	Positive	0
	Negative	0

July Assessments

DHS	6
ISBE	5

August Assessments

DHS	5
ISBE	5

September Assessments

DHS	5
ISBE	1

Number of Current Families by County

	May	Nov
Whiteside	43	55
Carroll	6	4
Lee	24	22
Ogle	13	23
Total	86	104

ISBE (Illinois State Board of Education) grant funds Lee and Ogle County services.

DHS (Department of Human Services) grant funds Whiteside and Carroll County services.

SCI is the fiscal agent for HFI.

You can do something to support the Healthy Families Program. HFI is happy to accept your donation of needed items. For more information, contact Kimberly Crump, Healthy Families Program Supervisor at 815-625-0013 ext. 113.